



ENCLOSURES

HOFFMAN NEMA 3R ENCLOSURE WITH FAN WF SERIES

DESCRIPTION

The **Hoffman WF Series enclosures** have a forced-air ventilation system for cooling drives or other heat producing equipment in applications that require outdoor protection. The enclosures have a white polyester powder finish that will reduce the solar heat load by up to 70% compared to a gray enclosure. An integrated solar shield on the top adds additional solar heat reduction. The integral fan and vent placement optimizes heat removal by drawing in from the bottom and exhausting at the top. Gasketing and the filter protects against contaminants entering the enclosure. An adjustable thermostat (70° to 140° F) brings on the fan when needed.

FEATURES

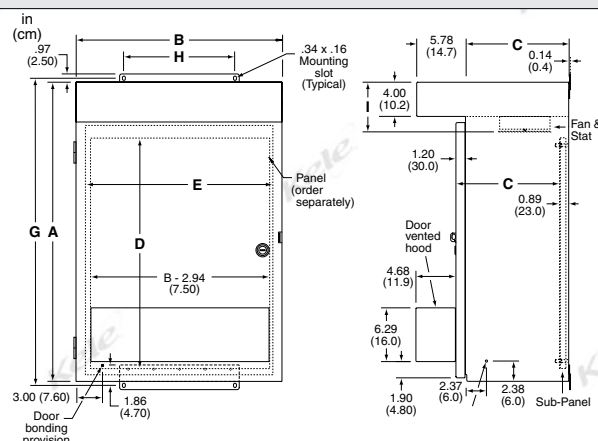
- **Active cooling ventilation system with factory-installed fan and filter (115 VAC)**
- **Terminal power connection for fan**
- **Easy access washable expanded metal filter**
- **Front hood exhaust and intake saves interior space**
- **Quarter turn latch with padlock attachment**
- **Collar studs for mounting back panel**
- **Largest two sizes constructed of aluminum to reduce weight**
- **Grounding provision on door and body**
- **DAH series heaters can be added to raise the temperature and prevent condensation**
- **16 and 14 gauge galvanized steel**
- **UL File #E61997**
- **One-year warranty**

Hoffman®



**WF3LP
NEMA 3R WITH FAN**

DIMENSIONS



ORDERING INFORMATION

Model	Drive HP	Dimensions A x B x C in (mm)	Weight lb (Kg)	Sub Panel Part Number	Sub Panel Dimensions D x E in (mm)	Mounting Holes G x H in (mm)	Weight lb (Kg)	Heater Part Number
WF3LP	3	29 x 24 x 12 (737 x 610 x 305 mm)	106 (48.1)	A-24P24	21 x 21 (533 x 533 mm)	29.94 x 13 (760 x 330)	14 (6.4)	DAH2001A
WF10LP	10	35 x 24 x 12 (889 x 610 x 305 mm)	111 (50.3)	A-30P24	27 x 21 (686 x 533 mm)	35.94 x 13 (913 x 330)	18 (8.2)	DAH2001A
WF25LP	25	41 x 24 x 12 (1041 x 610 x 305 mm)	124 (56.2)	A-36P24	33 x 21 (838 x 533 mm)	41.94 x 13 (1065 x 330)	22 (10.0)	DAH2001A
WF40LP	40	47 x 24 x 14 (1194 x 610 x 356 mm)	135 (61.2)	A-42P24	39 x 21 (991 x 533 mm)	47.94 x 13 (1218 x 330)	27 (12.2)	DAH2001A
WF75LP	75	55 x 36 x 16 (1397 x 914 x 406 mm)	140 (63.5)	A-48P36	45 x 33 (1143 x 838 mm)	55.94 x 27 (1421 x 686)	46 (20.9)	DAH4001B
WF100LP	100	67 x 36 x 16 (1702 x 914 x 706 mm)	165 (74.8)	A-60P36	57 x 33 (1448 x 838 mm)	67.94 x 27 (1726 x 686)	59 (26.8)	DAH4001B

† Add -P to the end of part number to order optional perf panel.