



# PANEL FABRICATION

## WIRING DUCT VD SERIES

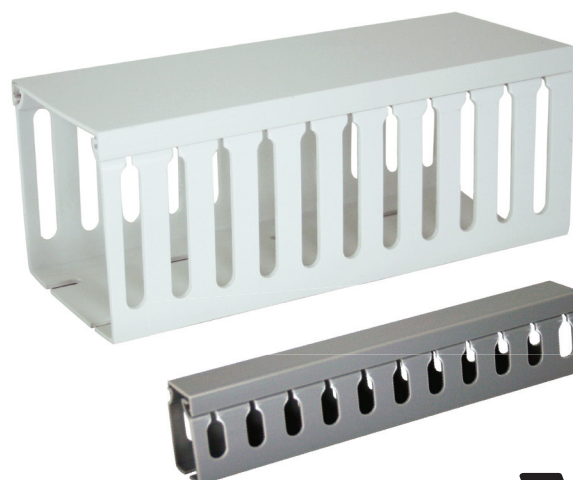
### DESCRIPTION

**VD Series Wiring Duct** allows for the simplification and acceleration of panel-building operations such as wire retention, identification of equipment and circuits, and wire separation.

**Value  
line**

### FEATURES

- *High impact PVC, self-extinguishing*
- *Equipped with cover*
- *Attractive white or gray finish*
- *UL file #E97527*
- *One-year warranty*



### ORDERING INFORMATION

<u>MODEL</u>	<u>DESCRIPTION</u>	<u>Carton Qty*</u>
Gray duct		
VD1-15G	1.5"H x 1"W x 6.5'L (3.81 cm x 2.54 cm x 2m), includes cover	56
VD1-3G	3"H x 1"W x 6.5'L (7.62 cm x 2.54 cm x 2m), includes cover	28
VD15-15G	1.5"H x 1.5"W x 6.5'L (3.81 cm x 3.81 cm x 2m), includes cover	38
VD15-3G	3"H x 1.5"W x 6.5'L (7.62 cm x 3.81 cm x 2m), includes cover	28
VD22-22G	2.25"H x 2.25"W x 6.5'L (5.72 cm x 5.72 cm x 2m), includes cover	18
VD22-3G	3"H x 2.25"W x 6.5'L (7.62 cm x 5.72 cm x 2m), includes cover	20
VD3-3G	3"H x 3"W x 6.5'L (7.62 cm x 7.62 cm x 2m), includes cover	16
White duct		
VD1-15W	1.5"H x 1"W x 6.5'L (3.81 cm x 2.54 cm x 2m), includes cover	56
VD1-3W	3"H x 1"W x 6.5'L (7.62 cm x 2.54 cm x 2m), includes cover	28
VD15-15W	1.5"H x 1.5"W x 6.5'L (3.81 cm x 3.81 cm x 2m), includes cover	38
VD15-3W	3"H x 1.5"W x 6.5'L (7.62 cm x 3.81 cm x 2m), includes cover	28
VD22-22W	2.25"H x 2.25"W x 6.5'L (5.72 cm x 5.72 cm x 2m), includes cover	18
VD22-3W	3"H x 2.25"W x 6.5'L (7.62 cm x 5.72 cm x 2m), includes cover	20
VD3-3W	3"H x 3"W x 6.5'L (7.62 cm x 7.62 cm x 2m), includes cover	16

\*Ordered per piece