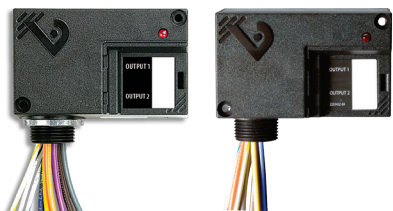
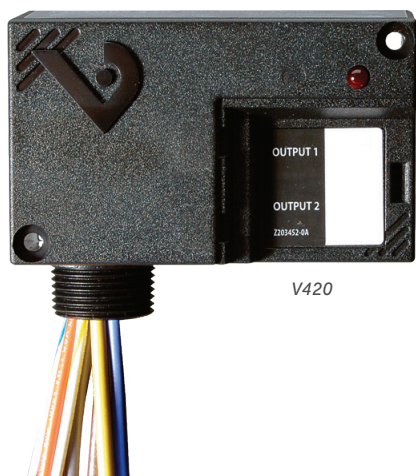




# Victory 320 & 420



V320



V420

## SPECIFICATIONS

Operating Temp Range	-40° to 40°C (-40° to 104°F)
Operating Humidity Range	10-90% RH non-condensing
Expected Relay Life	Electrical (@ rated current) 100,000 cycles; Mechanical (unpowered) 10,000,000 cycles
Relay Status	LED ON=energized
Insulation Class	277 Vac RMS
Agency Approvals	UL 508

### WIRE SPECIFICATIONS

Lead Length	14" (356 mm) min.
Gauge	UL1015; Coil: 18 AWG; Contacts: 12 AWG; HOA monitor wires: 16 AWG

### WARRANTY

Limited Warranty	5 years
------------------	---------

### TYPICAL COIL PERFORMANCE

Voltage	Coil Current	
	AC	DC
24 V	150 mA	64 mA
120 V	84 mA	
277 V	102 mA	

### CONTACT RATINGS

Resistive	20 A @ 277 Vac, 28 Vdc	
Motor	120 Vac, 1 HP	
	277 Vac, 2 HP	
Pilot Duty	A300	
Ballast	20 A @ 277 Vac N.O.	
	10 A @ 277 Vac N.C.	
Tungsten	10 A @ 120 Vac N.O.	
	2 A @ 120 Vac N.C.	

## DPDT RELAYS PROVIDE VERSATILITY

### FEATURES

- Sleek field enclosure reduces the need for panel space
- The nipple mount feature allows the Victory Series to be mounted to any electrical enclosure easing installation
- Flexible tinned stranded wire...fits easily in tight spaces and provides secure connections to wire nuts
- UL508 Listed...designed and listed for field installation... makes electrical inspection a snap

### DESCRIPTION

The Victory 320 and 420 DPDT power duty enclosed relays combine industrial strength and ease of use. With the nipple mount enclosure, installation could not be easier. The V320/V420 need no dedicated field enclosure, so they are the ideal retrofit devices. One coil input controls the state of two power rated contacts for the simultaneous control of two devices or both poles of a single-phase circuit, e.g. motor loads. Field-selectable high and low voltage coil inputs provide on-site versatility.

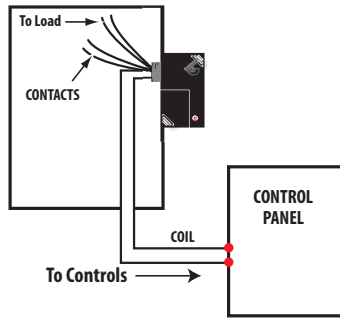
### APPLICATIONS

- Command contactors
- Control motors
- Isolation
- Device interlocking
- Relay logic
- Sense voltages for alarm conditions
- Control fractional HP motors

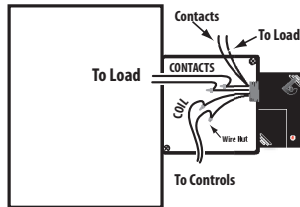


## WIRING DIAGRAMS

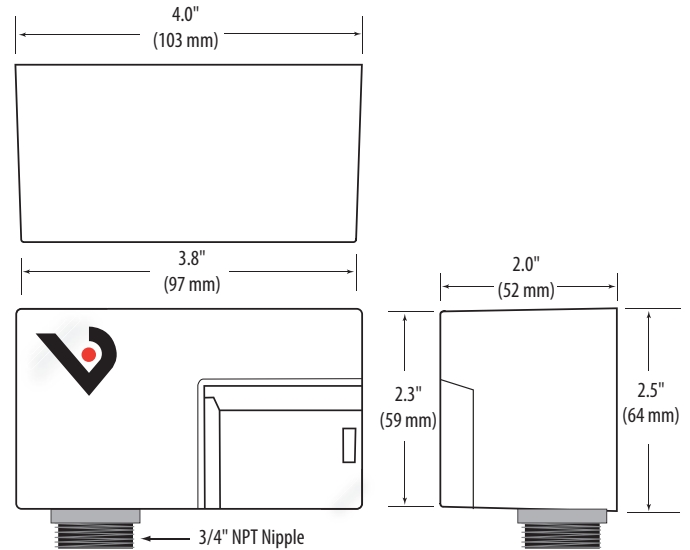
Nipple mount directly to a panel



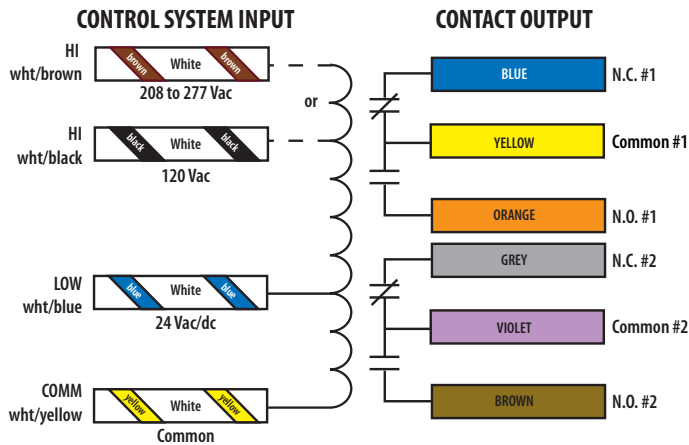
Nipple mount to any 2x or 4x electrical box



## DIMENSIONAL DRAWING



## WIRE COLOR CODES



## ORDERING INFORMATION



MODEL	RELAY	COIL	AMPERAGE RATING	RELAY POWER LED	UL
V320	DPDT	24 Vac/dc, 120 Vac	20 A		
V420		24 Vac/dc, 208 to 277 Vac			

Some devices are plenum rated per UL 1995...see White Paper VWP01 at [veris.com](http://veris.com) for details.