



PNEUMATICS & FITTINGS

THREE-WAY SOLENOID AIR VALVE V11 SERIES

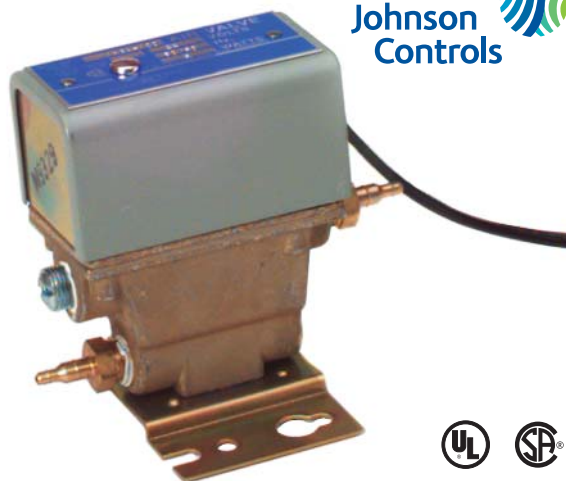
DESCRIPTION

V11 Series Three-way Solenoid Air Valves are furnished for two-position action and have three identified connections: a normally open (N.O.) port with 1/8" FNPT connection; a normally closed (N.C.) port; and a common (COM) port with 1/4" barbed fittings. The posts in the die-cast aluminum valve body have No. 60 mesh (217 micron openings) monel screens to prevent foreign material from entering the valve ports.

APPLICATION

The **V11 Series** is used in applications where the operation of a pneumatic device is dependent upon an electrical circuit. The valves direct supply air to the pneumatic device when the coil is energized or de-energized, depending on the supply and exhaust air connections.

All **V11 Series** valves are designed for use only as temperature control devices. Where system closure, improper flow, or loss of pressure due to valve failure can result in personal injury and/or loss of property, it is recommended that additional devices be added to accommodate proper system operation, such as using a whisker switch to monitor the blade position on smoke dampers.



FEATURES

- **Three-port connection C, N.O., N.C.**
- **Two-position operation**
- **Positive air seal**
- **Manual operation for testing and checkout of some models**
- **Compact and lightweight**
- **Mounted in any position**
- **UL listed, File #MH5939 and CSA certified**
- **Multiple voltages available**
- **High capacity**

SPECIFICATIONS

Product number	Coil voltage	Operating pressure	0-20 psig (0 to 138 kPa)
V11HAA-100	110/120 VAC, 50/60 Hz	Air capacity	1.5 scfm (2592 scim) 15 psig (105 kPa) air
V11HBA-100	220/240 VAC, 50/60 Hz	Finish	
V11HCA-100	208 VAC, 50/60 Hz	Valve body	Die-cast aluminum
V11HFA-100	277 VAC, 50/60 Hz	Cover and case	Gray baked enamel
V11HDA-100	440/480 VAC, 50/60 Hz	Material	
V11HGA-100	24 VAC, 50/60 Hz	Valve body	Die-cast aluminum
V11PNA-105	24 VDC	Cover and case	Cold rolled steel
Power consumption		Ambient temperature	
AC models	6W	AC models	Min 32°F (0°C) Max 140°F (60°C)
24 VDC models	9W	DC models	Min 32°F (0°C) Max 104°F (40°C)
Air connections	1/4" barb connections in common port and normally closed port, normally open port is 1/8" FNPT	Approvals	UL listed (all V11s) CSA (all except V11PNA)
Wiring connections	18 AWG 18" wire leads	Weight	0.75 lb (0.34 kg)
Conduit opening	7/8" (0.88 cm) diameter	Warranty	1 year
Maximum pressure rating	30 psig (207 kPa)		

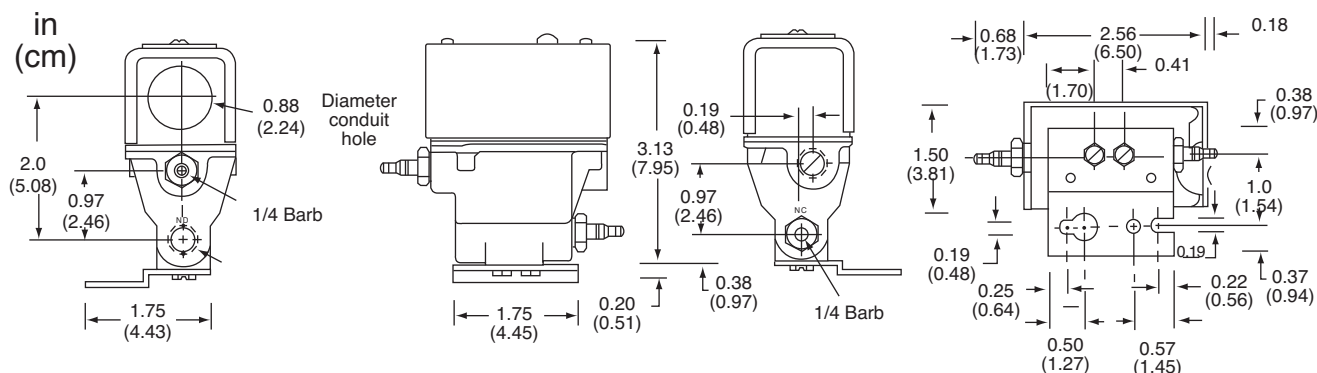
PNEUMATICS & FITTINGS

THREE-WAY SOLENOID AIR VALVE

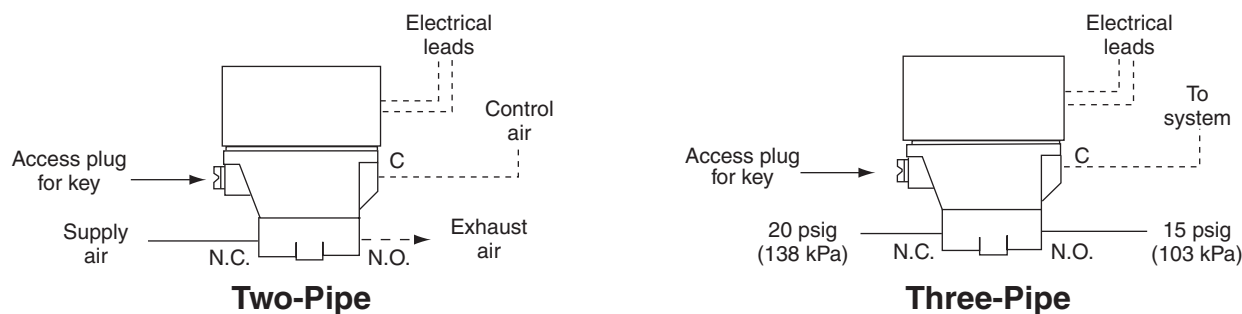
V11 SERIES



DIMENSIONS



APPLICATION DIAGRAM



OPERATION

In a typical application, supply air is connected to the normally closed port, and the control device is connected to the common port. When the solenoid is energized, a magnetic field activates a plunger-type valve stem, and supply air is directed to the control device. When the solenoid is de-energized, the supply air connection is closed, and the normally open port exhausts air from the control device. Reverse action may be obtained by connecting the supply air to the normally open port, using the normally closed port for exhaust (see Application Diagram above). For day/night or summer/winter two-pressure switching, see the example Three-pipe Application Diagram above. To manually operate, remove the access plug, and insert the **Y99AA-4** key. The manual opener key is ordered separately.

ORDERING INFORMATION

MODEL	DESCRIPTION	MODEL	DESCRIPTION
V11HAA-100	110/120 VAC, 50/60 Hz	V11HFA-100	277 VAC, 50/60 Hz
V11HCA-100	208 VAC, 50/60 Hz	V11HGA-100	24 VAC, 50/60 Hz
V11HDA-100	440/480 VAC, 50/60 Hz	V11PNA-105	24 VDC
V11HBA-100	220/240 VAC, 50/60 Hz	Y99AA-4	Manual opener key