

1008140130

TA-13

Turbine Mini On Wall Back Box White



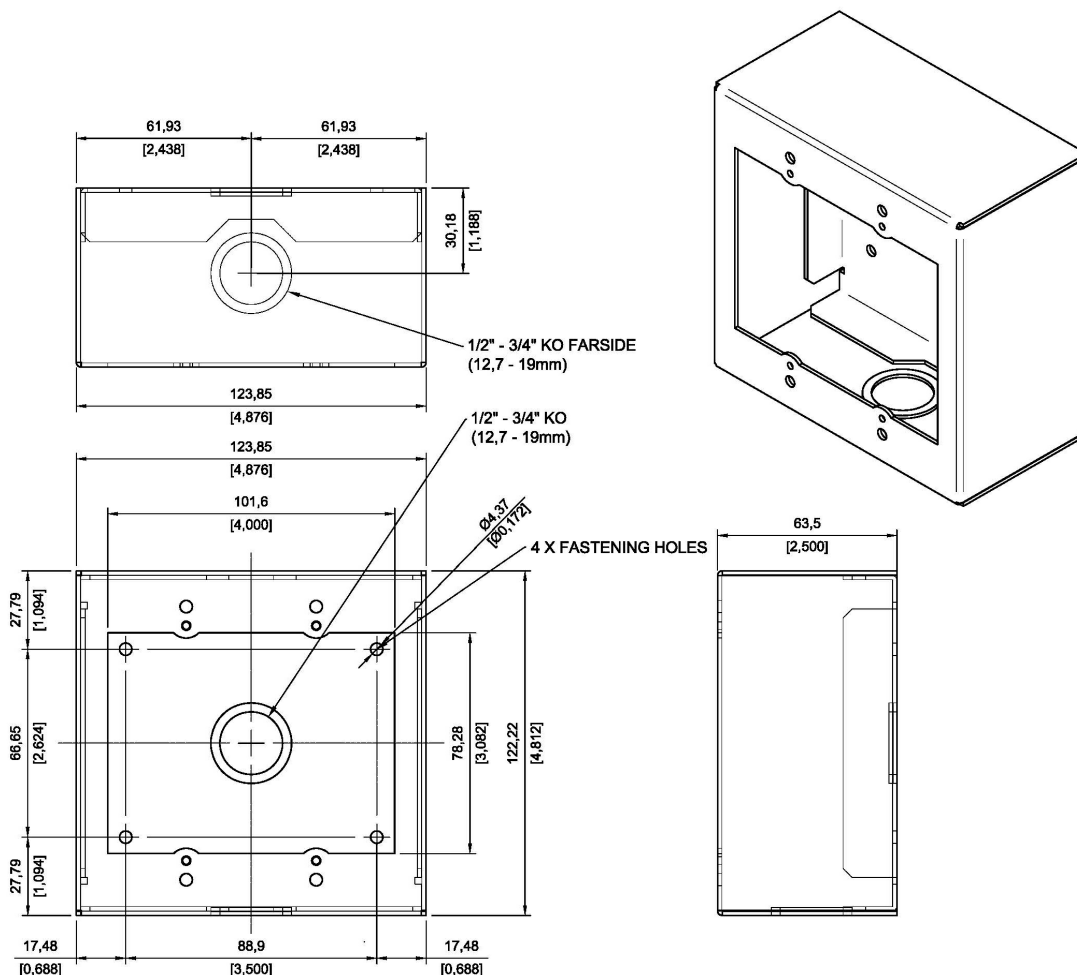
DESCRIPTION

- 16-gauge galvanized steel construction
- White textured paint
- Convenient surface mounting
- Compatible with most standard 2-gang components, plates and covers
- Two 1/2-3/4" Concentric knockouts for conduit

The TA-13 on-wall backbox are designed for surface mounting of standard wall plates. The backbox can be used to conveniently mount the Turbine Mini stations TMIS-1 and TMIS-2. Rugged construction make the box ideal for indoor commercial and industrial applications.

Mounting holes allow for fixed mounting on virtually any wall surface. The backbox model is also available in textured black paint. Standard concentric knockouts facilitate convenient wiring and installation.

TECHNICAL DIMENSIONS



USED WITH

Created: 23.09.2015, updated: 20.03.2017

page 2/3

www.zenitel.com

info@zenitel.com

Zenitel and its subsidiaries assume no responsibility for any errors that may appear in this publication, or for damages arising from the information therein. Vintor-Stentofon products are developed and marketed by Zenitel. The company's Quality Assurance System is certified to meet the requirements in NS-EN ISO 9001. Zenitel reserves the right to modify designs and alter specifications without notice.

ZENITEL PROPRIETARY. This document and its supplementing elements, contain Zenitel or third party information which is proprietary and confidential. Any disclosure, copying, distribution or use is prohibited, if not otherwise explicitly agreed in writing with Zenitel. Any authorized reproduction, in part or in whole, must include this legend. Zenitel - All rights reserved.

1008116010

TMIS-1

Turbine Mini Intercom



1008116020

TMIS-2

Turbine Mini Intercom

