

SmartStruxure Lite Solution

Get control. Get efficient. Get value.

Integrated small- to medium-sized building management



Make the most of your energySM

Schneider
Electric



Studies show that most buildings waste up to half the energy they consume. SmartStruxure Lite solution allows you to save that energy while significantly improving comfort – and your bottom line.



Finally, efficient building control made affordable for smaller-scale buildings

Energy consumption and waste is a significant concern, no matter what size building you operate. Large buildings have enjoyed the benefits of building automation for years, reducing energy costs and creating a better environment for their occupants and customers. But what about buildings with a smaller footprint? Until now, that kind of technology has likely been too expensive or too impractical to use. Instead, facility managers have had to settle for thermostats and high energy bills.

Schneider Electric™ has leveled the playing field with SmartStruxure™ Lite solution – an affordable building management system (BMS) specifically designed for small and medium size buildings. Easy to install with minimal interruption to your daily operations, SmartStruxure Lite solution delivers immediate energy savings without compromising on comfort. Finally, you too can enjoy the same benefits historically only offered in large-scale building management systems – and at a small-scale price.

Did you know?

Energy expenses in the average commercial building consist of:

HVAC = **32-50%**

Lighting = **20-25%**

Refrigeration = **4-6%**

*A BMS can cover approximately **56-81 %** of your building's energy use!

Turning challenges into opportunities

- > Energy prices are unstable and continue to rise with HVAC as the #1 contributor in most buildings. Delivering up to 30% energy savings, SmartStruxure Lite outsmarts energy challenges and adheres to strict efficiency regulations.
- > Flexibility is crucial yet can be scarce in building automation. SmartStruxure Lite encompasses the very essence of flexibility and can be custom-designed for easy integration into virtually all building types.
- > Most BMSs are expensive and complex, not fitting the profile for smaller buildings. SmartStruxure Lite is specifically designed to adapt to your requirements, which makes it affordable *and* attainable.
- > Downtime is lost revenue and simply not an option. With SmartStruxure Lite's non-intrusive installation and wireless technology, you can stay open and rely on minimal disruption to your business.
- > Protecting your investment is of utmost importance. You need a solution that is able to grow with your business. SmartStruxure Lite will seamlessly scale for continuous improvement and a future-proof solution.

* **Source:** Buildings Energy Data Book, U.S. Department of Energy



Drive additional ROI

It's not just about energy savings. SmartStruxure Lite can dramatically improve uptime, increase staff productivity, strengthen asset life and reduce maintenance costs and CO₂ emissions - helping you overcome some of your core business challenges.

A solution that pays for itself. Year after year.

SmartStruxure Lite uses web and wireless technology, reducing complexity and making it a true cost-effective solution for your small building. Long-term energy savings is made possible by features such as trending, which enables you to export data and analyze energy usage for preventative measures today and tomorrow.

Best of all, SmartStruxure Lite solution pays for itself with a quick return on investment. That makes it one of the best investments a building owner can make.

A solution you can use today, and grow tomorrow

Future-proof your investment with a solution that is fully scalable.

It starts with low cost and easy installation via wired or wireless network options that enable fast deployment and won't disrupt your building, occupants or customers. It provides state-of-the-art capabilities for controlling your building today. And, it grows with you for easy integration into a larger building management solution. You can even control multiple buildings across your enterprise with remote monitoring using web-enabled software.

Schneider Electric's experts will partner with you to deliver a solution that fits your unique needs today – and tomorrow.



Driving net present value (NPV) and internal rate of return (IRR) are at the forefront of your decision-making process. SmartStruxure Lite boosts these metrics, delivering an attractive investment spanning the life of your building.

Optimizing building performance

FEATURES

- > Industry-leading wireless technology to control your HVAC, lighting and metering
- > Fully programmable, providing anytime, anywhere remote access
- > Lowest total cost of ownership with no-license-fee software and the controller, gateway and server all in one box
- > Flexible monitoring, control, and scheduling options
- > View all your systems on a customizable web user interface
- > Simplified engineering and scalability through open systems and pre-configured objects and applications
- > Support FTP, Modbus®, CANbus™, ZigBee®, EnOcean®, BACnet®, and oBIX®

BENEFITS

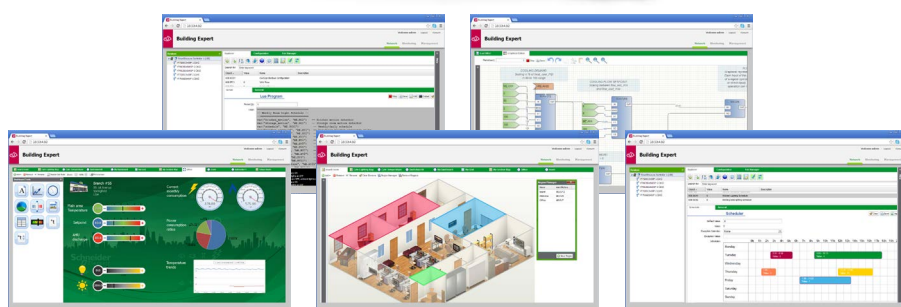
- > Effectively manage your energy costs and your energy waste
- > Optimize operational efficiency as well as productivity, equipment performance and reduced risk
- > Quickly realize ROI through enticing pay-back periods
- > Enhance occupant comfort and maximize business operations
- > Fast installation for zero downtime and minimal expense
- > Reduce your carbon footprint
- > Stay ahead of increasingly stringent environmental regulations



Buildings with a footprint of 10,000 m² (100,000 f²) or less represent a majority of all commercial buildings. However, less than 10 percent of these facilities benefit from the ROI delivered by building management systems. Now they can.

How it all works

SmartStruxure Lite solution offers all the building management system functionalities necessary to optimize energy efficiency and comfort in small and medium facilities. It combines a no license-fee web interface and cutting edge hardware to integrate and manage your building's systems at the lowest total cost of ownership per location.



StruxureWare® Building Expert

The software behind SmartStruxure Lite. It is fully programmable and includes:

Access

- > Local and remote access via the LAN or web.
- > Protected user-rights

Monitoring

- > Dashboards
- > Floorplans

Control

- > Programmable using scripts or graphical programming
- > Schedules, events, alarms

Scalability

- > Export data for analysis
- > Integration to other systems



Multi-Purpose Managers

These are the bridges between your building's systems, and your ability to control them. They combine controller, gateway, and Web server capabilities, all in one box. They can integrate a wide variety of devices and systems, using either wired or wireless communication, including: EnOcean, ZigBee, Modbus, as well as analog and binary inputs and outputs.



Controllers and Sensors

Connect, monitor and control your building's systems using controllers and sensors made specifically for your HVAC, lighting, and power systems, with an ever-growing ecosystem of integrated Schneider Electric and third-party devices.

**Small sample of integrated products*



SmartStruxure Lite solution can be integrated into larger BMS solutions, such as Schneider Electric's SmartStruxure solution, using MPM devices connected via BACnet/IP.



The architects of efficiency

As a global specialist in energy management and automation with operations in more than 100 countries, Schneider Electric offers integrated solutions across multiple market segments, including leadership positions in Non-residential & Residential Buildings, Industries & Machines Manufacturers, Utilities & Infrastructure and Data Centers & Networks. Focused on making energy safe, reliable, efficient, productive and green, the Group's 170,000 employees achieved revenues of 25 billion euros in 2014, through an active commitment to help individuals and organizations make the most of their energy.

Our company by the numbers:

- > €25 billion (\$30 billion) in sales in 2014
- > 170,000+ employees in more than 100 countries
- > 200+ factories around the world
- > 11,000 R&D engineers in the world



A perfect solution for all building types.



Education



Office



Retail



Bank



Healthcare



Hospitality



For more information, please visit <http://www.schneider-electric.com/buildings>

Schneider Electric Americas

Boston ONE Campus
800 Federal Street
Andover, MA 01810-1067
Tel: +1-978-794-0800

Schneider Electric Asia Pacific

13th Floor, East Wing, Warwick House,
Taikoo Place, 979 Kings Road,
Quarry Bay, Hong Kong, SAR
Tel: +852 2980 8528

Schneider Electric EMEA

Jägershillgatan 18
SE-213 75, Malmö, Sweden
Tel: +46 (40) 38 68 50