



# GAS & SPECIALTY SENSORS

## PLENUM SMOKE DETECTORS

### HS-100 SERIES

#### DESCRIPTION

The **HS-100 Series Plenum Smoke Detectors** provide early detection of smoke and combustion products present in air moving through HVAC plenum return systems in commercial rooftop package unit applications. The detectors are designed to prevent the recirculation of smoke in areas by the air handling system's fans and blowers.

#### FEATURES

- **Universal voltage: 24 VAC, 24 VDC, 115 VAC, or 230 VAC**
- **Visual indication of power and alarm status**
- **Two alarm contacts and one trouble contact**
- **Interchangeable "plug-in" photoelectric or ionization heads**
- **Compatible with building automation and fire alarm systems**
- **Dust filtering included in detector head**
- **Interconnect up to 30 detectors for common function**

NEW!



HS-100



MEA  
approved



CSFM Listed

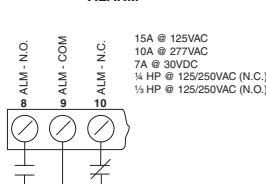
#### SPECIFICATIONS

<b>Power supply</b>	24 VAC: @ 35 mA standby, 74 mA alarm; 24 VDC: @ 15 mA standby, 56 mA alarm; 115 VAC: @ 25 mA standby, 32 mA alarm; 230 VAC @ 12 mA standby, 16 mA alarm
<b>Relay contact rating</b>	1-SPDT, 10A, 115 VAC, resistive; 1-SPST-NO, 2A
<b>Alarm</b>	1-SPST-NC, 10A, 115 VAC, resistive
<b>Trouble</b>	
<b>Radioactive element</b>	For <b>HS-100-N</b> only Americium 241, 0.9 $\mu$ Ci
<b>Air velocity</b>	
<b>HS-100-N</b>	0-2000 fpm (0-10.2 mps)
<b>HS-100-P</b>	0-3000 fpm (0-15.2 mps)
<b>Wiring</b>	Solid or stranded, 12 to 22 AWG terminals
<b>Agency approvals</b>	
<b>UL &amp; CUL listed</b>	UL268A; UROX, UROX7, File #S2829
<b>CSFM listed</b>	3240-1004:118
<b>MEA approved</b>	73-92-E, Vol. 26
<b>Ambient temperature</b>	
<b>HS-100-N</b>	32° to 158°F (0° to 70°C)
<b>HS-100-P</b>	32° to 140°F (0° to 60°C)
<b>Humidity</b>	0% to 85% RH noncondensing
<b>Material</b>	White plastic (Makrolon 94V-0)
<b>Dimensions</b>	6" Dia. x 4.0"H (15.2 x 10.2 cm)
<b>Weight</b>	1.0 lb (0.45 kg)
<b>Warranty</b>	1 year

#### WIRING

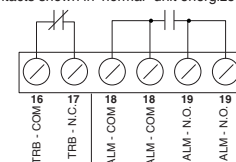
##### DRY CONTACT OUTPUTS

##### ALARM

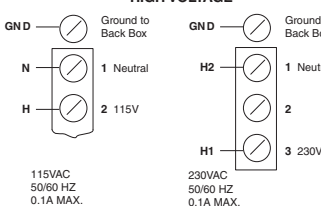


##### FACP

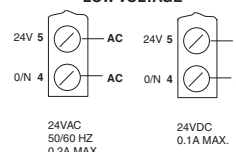
\* Trouble contacts shown in "normal" unit energized state



##### HIGH VOLTAGE



##### LOW VOLTAGE



**CAUTION:** Do not use looped wire under terminals. Break wire run to provide for proper supervision of connections.

#### ORDERING INFORMATION

##### MODEL

HS-100-N

HS-100-P

##### DESCRIPTION

Plenum ionization smoke detector

Plenum photoelectric smoke detector