



# H120 Series



## SPECIFICATIONS

Sensor Power	Induced from relay coil power
Operating Temperature	-15 to 60 °C (5 to 140 °F) (13.8 A max.), -15 to 50 °C (5 to 12 °F) (2 A max.)
Operating Humidity	10 to 90% RH non-condensing
Expected Relay Life (mechanical)	10 million cycles
Relay Status	LED ON=energized
Agency Approvals	UL 508 closed type device listing, CAT III, pollution degree 2, basic insulation
Limited Warranty	5 years

LEAD WIRE SPECIFICATIONS	
Lead Length	14" (356 mm) min.
Style and Gauge	UL1015; Coil: 18 AWG; Contacts: 12 AWG; Status: 16 AWG

Note: Do not use the LED status indicators as evidence of applied voltage.

## SPST STATUS RELAY WITH INTEGRAL CURRENT SWITCH

### DESCRIPTION

The **H120** and **H120NC** offer a fixed current switch and SPST relay in a single externally mounted housing. Combining the current sensor and relay in one easy-to-install package eliminates the need to fit multiple devices into small electrical enclosures and simplifies the installation. Remove the labor associated with installing a separate current sensor.

### APPLICATIONS

- Unit Ventilators
- Fan Coil Units
- Exhaust Fans
- Fan Terminal Units
- Fractional HP Motors
- Light Resistive Loads

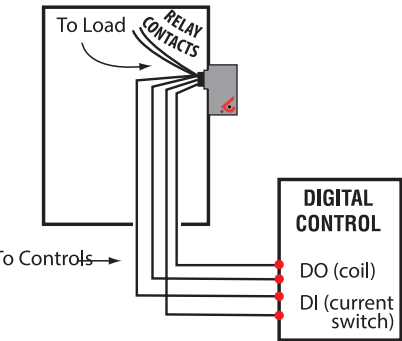
### FEATURES

- The current switch and relay are in series...connect the contacts to the load and your current switch is automatically installed
- The nipple mount housing can be connected to any 1/2" conduit knockout for installation versatility
- Relay coil LED streamlines job commissioning and check out
- HP ratings make the H120 ideal for control and status of fractional HP motors
- 5-year warranty
- NEMA 1 rated housing may be used in plenum spaces
- Can be externally mounted to the electrical enclosure...space saver
- 0.1 A turn-on...easily monitors the smallest motors

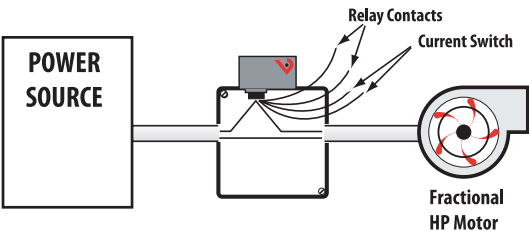


WIRING DIAGRAMS

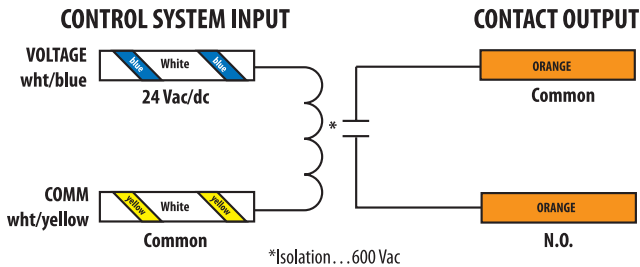
Nipple mount directly to a panel



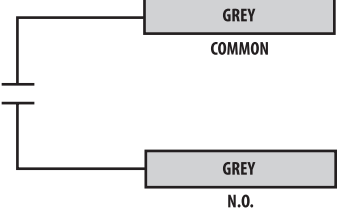
Nipple mount to 4x electrical box



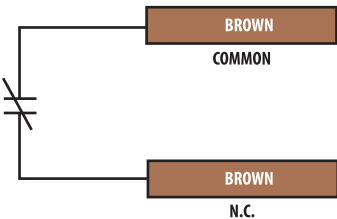
WIRE COLOR CODES



H120 STATUS OUTPUT



H120NC STATUS OUTPUT

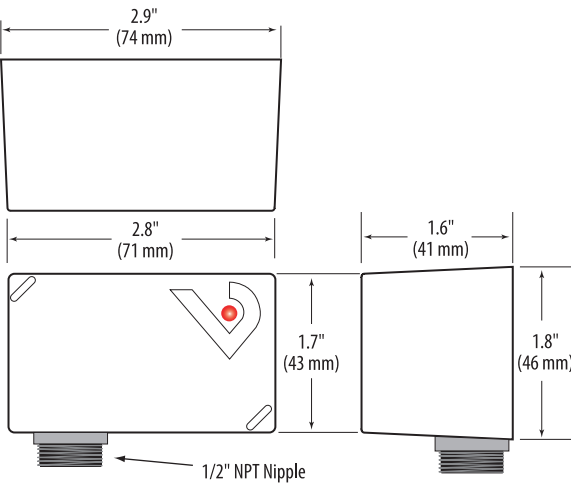


ORDERING INFORMATION



MODEL	AMPERAGE RANGE	COIL	RELAY	STATUS OUTPUT	TRIP POINT	HOUSING	RELAY POWER LED	UL
H120	0.1 to 20 A	24 Vac/dc	SPST, N.O.	N.O. 100 mA @ 30 Vac/dc	0.1 A or Less	Nipple Mount	●	●
H120NC				N.C. 100 mA @ 30 Vac/dc			●	●

DIMENSIONAL DRAWING



RELAY CONTACT RATINGS

Resistive	20 A (r) @ 277 Vac/28Vdc (250,00 Cycles)
Motor	120 Vac, 1HP 208 Vac, 1HP 250 Vac, 2HP 277 Vac, 2HP
Ballast	277 Vac, 20 A
Tungsten	120 Vac, 10 A

TYPICAL COIL PERFORMANCE

Voltage	Coil Current	
	AC	DC
24V	75 mA	32 mA

\*See operating temperature specifications