

# NUTATING DISC SERIES

Cost-effective Metering for Industrial Applications



Nutating Disc positive displacement meters are a cost-effective solution for industrial flow monitoring. These devices are available in sizes from 1/2" to 2" and are capable of handling flows up to 170 gallons per minute. Maintenance is fast, easy, and rarely required. The meter houses a measurement chamber that contains a disc. Liquid flowing through the chamber causes this disc to nutate, or wobble. This motion is sensed by a magnet, which transmits flow data.

## SPECIFICATIONS

Max. Flow Rate	170 GPM
Max. Operating Pressure	150 psi
Max. Operating Temp.	49 °C (120 °F)
Operating Temp. Range	0 to 49 °C (32 to 120 °F), optional to 121 °C (250 °F)
Accuracy	±1.5% of full scale
Repeatability	±0.5%
Wetted Materials	Brass, SAN, Noryl, Nylon, Polyethylene, Polypropylene

## WARRANTY

Limited Warranty	1 year
------------------	--------

## Wide flow range

Increased accuracy at high and low flow rates

## Durable components

Minimal maintenance required

## Rugged construction

Rugged bronze or plastic construction

## Increased versatility

Optional pulse output transmitter

## Easy maintenance

No need to remove from the line... reduce costly downtime

## Simple operation

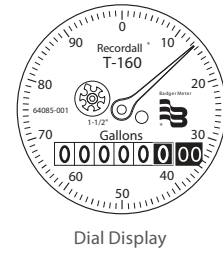
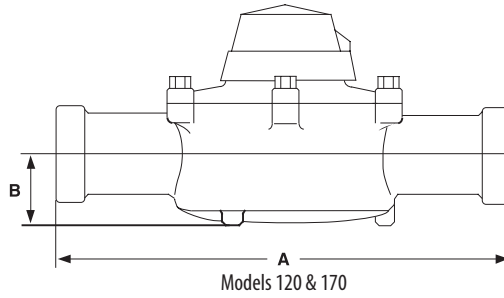
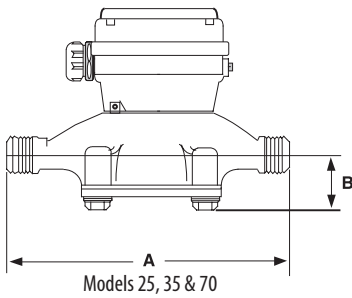
Mechanical dial display

## APPLICATIONS

- Industrial flow systems
- Inventory and process control of cold and hot systems
- Fuel consumption



**DIMENSIONAL DRAWINGS**



DIMENSIONS IN INCHES WITHOUT REGISTER					FLOW RATE IN GALLONS	
Meter Model	Meter Size	Housing Material	A: Meter Length	B: Center to Baseline	Cold Liquids: 32 to 120°F	Approx. Weight
BGR-M25	5/8"	Bronze	7-1/2"	1-3/8"	1/2 to 25 gpm	5 lbs.
BGR-M35	3/4"	Bronze	9"	1-3/4"	3/4 to 35 gpm	6 lbs.
BGR-M70	1"	Bronze	10-3/4"	2-1/4"	1 to 70 gpm	12 lbs.
BGR-M120	1-1/2"	Bronze	12-5/8"	2-5/8"	2 to 120 gpm	20 lbs.
BGR-M170	2"	Bronze	15-1/4"	3-3/8"	2 to 170 gpm	30 lbs.

Note: Other meter sizes and configurations are available. Consult Veris for availability.

**ORDERING INFORMATION**

Common configurations are shown below with Veris part numbers. For custom configurations, consult Veris for custom configuration part numbers.

VERIS PART #	MANUF. PART #	DESCRIPTION
BGR-M25-625LNSA-TS-GAXX	M25-625LNSA-TS-GAXX	Flow, Disc, 1/2"Line, Connections, Pulse Output with Dial Display
BGR-M35-750LNSB-TS-GAXX	M35-750LNSB-TS-GAXX	Flow, Disc, 3/4"Line, Connections, Pulse Output with Dial Display
BGR-M70-100LNSC-TS-GAXX	M70-100LNSC-TS-GAXX	Flow, Disc, 1"Line, Connections, Pulse Output with Dial Display
BGR-M120-150LNSF-TS-GAXX	M120-150LNSF-TS-GAXX	Flow, Disc, 1-1/2"Line, Connections, Pulse Output with Dial Display
BGR-M170-200LNSG-TS-GAXX	M170-200LNSG-TS-GAXX	Flow, Disc, 2"Line, Connections, Pulse Output with Dial Display

Note: Other meter sizes and configurations are available. Consult Veris for availability.