



LIGHTING CONTROLS

OCCUPANCY SENSORS

MODEL CX-100, CI-200

DESCRIPTION

The **Model CX-100 Wall-/Corner-Mount** and **Model CI-200 Ceiling-Mount Devices** are full-featured passive infrared (PIR) occupancy sensors that control lighting and HVAC equipment. Both units can control equipment directly through a power pack or through a BAS with the SPDT isolated relay built into the sensors. Both models have adjustable sensitivity and time delays.

FEATURES

- **Advanced PIR technology**
- **Adjustable time delay**
- **Adjustable unit sensitivity**
- **Contains isolated relay for use with BAS and other control systems**
- **Fresnel lens with choice of three coverage patterns (CX-100)**
- **360-degree coverage (CI-200)**
- **LED indicator**
- **Five-year warranty**



CI-200



CX-100

WattStopper | **legrand**



12

LIGHTING CONTROLS

OPERATION

Models CX-100 and CI-200 use advanced PIR technology to detect occupancy. Detection occurs when the units sense the difference between infrared emissions from a human body and the background space. They are powered by 24 VDC either from a power pack or separate 24 VDC power supply. Both units operate by sending a low-voltage signal to the power pack and energizing the SPDT relay when a person enters the controlled area. Both units have an adjustable time delay for turning the lights off when no occupancy is detected, and both have an adjustable sensitivity setting.

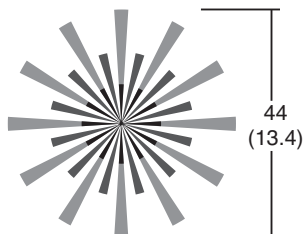
Each unit contains an adjustable light-level sensor for controlling lighting based on ambient light level. This feature is wired differently than the occupancy-only output, and does not work with the SPDT-isolated relay.

SPECIFICATIONS

| | | | |
|---|---|--------------------------------|---|
| Power supply | 24 VDC | Isolated contact rating | 1A @ 24 VDC, 1/2A @ 120 VAC, SPDT |
| Power consumption | | Agency approvals | UL and cUL listed |
| CX-100 | 20 mA | Operating temperature | 32° to 98°F (0° to 36°C) |
| CI-200 | 26 mA | Dimensions | |
| Time-delay adjust | Digital (DIP switch setting) from 30 sec to 30 min. | CX-100 | 3.38"L x 3.35"W x 2.05"D (8.6 x 8.5 x 5.2 cm) |
| Ambient light level adjust | From 2.5 to 430 fc | CI-200 | 3.3" fl x 2.2" D (8.5 x 5.6 cm), extends approximately 0.36" from ceiling |
| Coverage | See patterns on next page | Weight | 1.0 lb (0.46 kg) |
| Number of sensors per power pack | Three | Warranty | 5 years |

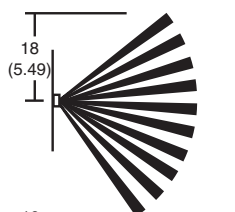
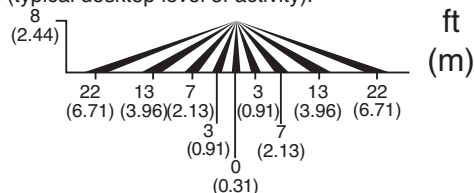


COVERAGE PATTERNS



Coverage shown is maximum and represents coverage for half-step walking motion. Under ideal conditions, with no barriers or obstacles, coverage can reach up to 1200 ft² for half-step walking motion and up to 500 ft² for hand motion (typical desktop level of activity).

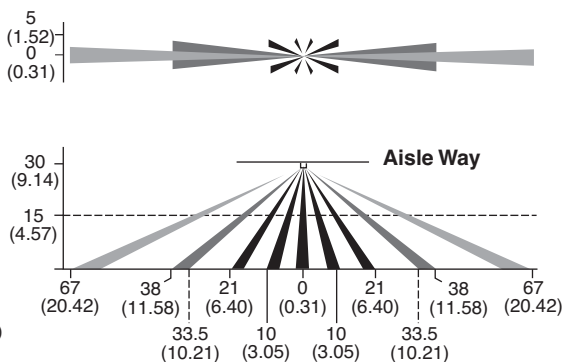
CI-200



Dense Wide Angle (Standard)



Long Range



Aisle Way

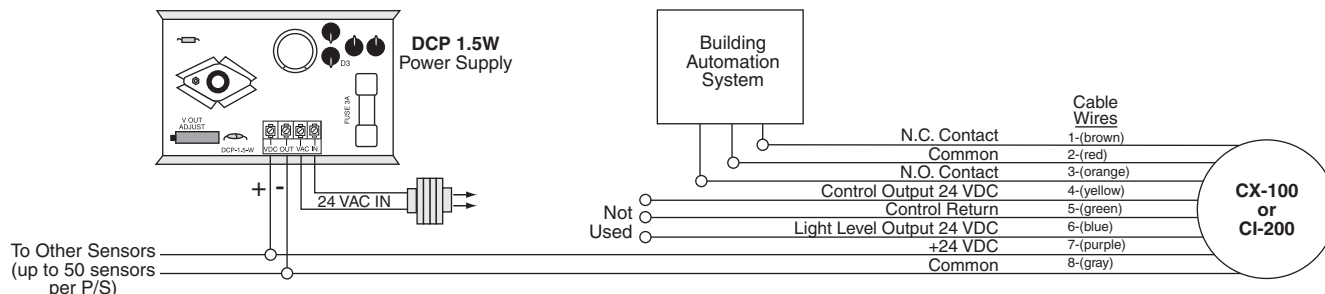
Coverages shown are maximum and represent coverage for half-step walking motion. For building spaces with lower levels of activity or with obstacles and barriers, coverage size may vary.

CX-100

12

LIGHTING CONTROLS

WIRING



ORDERING INFORMATION

| MODEL | DESCRIPTION |
|-----------|---|
| CX-100 | Dense wide-angle sensor with mounting bracket |
| CX-100-1* | Long-range sensor with mounting bracket |
| CX-100-3* | Aisle-way sensor with mounting bracket |
| CI-200 | Ceiling-mount sensor |
| | * Special order |

| Model | RELATED PRODUCTS | Voltage |
|------------------|----------------------|-----------------|
| BZ-50 | Description | 120-277 VAC |
| B347D-P | Universal Power pack | 347 VAC |
| S-120/277/347E-P | Power pack | 120/277/347 VAC |
| DCP-1.5W | Slave pack | 24 VAC/24 VDC |
| | Power supply | |