



Overview

Feenics Integrated Access Systems combine FlexPower® power modules alongside Mercury Security™ access hardware in one compact and secure solution.

The FPO Power Supply / Battery Charger is selectable for 12 or 24 VDC and provides two power outputs. One output provides continuous output power for system use, the second is resettable output power, activated when the fire alarm disconnect is initiated.

For access or lock power, dual D8P modules provide sixteen class 2 power limited outputs rated at 2.5A per output, each individually programmable for constant output or FAI disconnect.

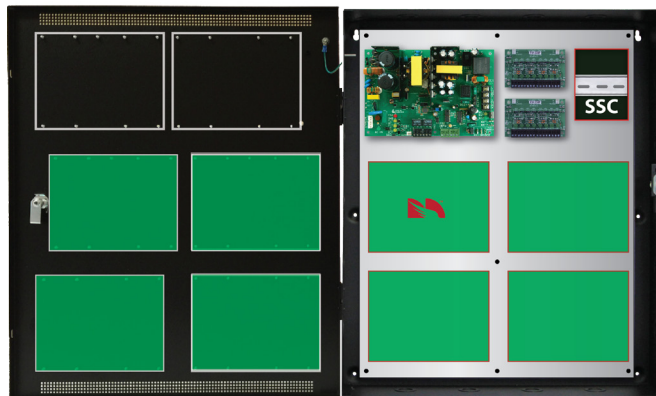
LSP enclosures are painted steel with removable backplate and include lock, two (2) keys, tamper switch and din rail for SSC mounting.

System Features

- ♦ **FPO offline power supply**
 - 120 or 230 VAC input
 - 12 and 24 VDC outputs
 - On board Fire Alarm Interface
 - Continuous and resettable DC
- ♦ **Distributed output module**
 - Sixteen class II power limited at 2.5A each
- ♦ **Expansion options**
 - Increased power, multiple voltages
 - Additional distribution outputs
 - Network monitoring and reporting
- ♦ **Lifetime Warranty**

Enclosure Features

- ♦ **Labor saving design**
 - Pre-wired power section
 - Pre-punched knockouts
 - Removeable backplate simplifies installs
 - Pre-defined hole pattern for power section
 - Access panels mount on threaded studs - no drilling required
- ♦ **Additional benefits**
 - Wire management room
 - 4.5" enclosure depth fits battery set
 - Tamper switch, lock, dual key set standard
 - Mounting hardware for access boards included



AXV-150-16DRE4M1

Feenics

Ordering

Description

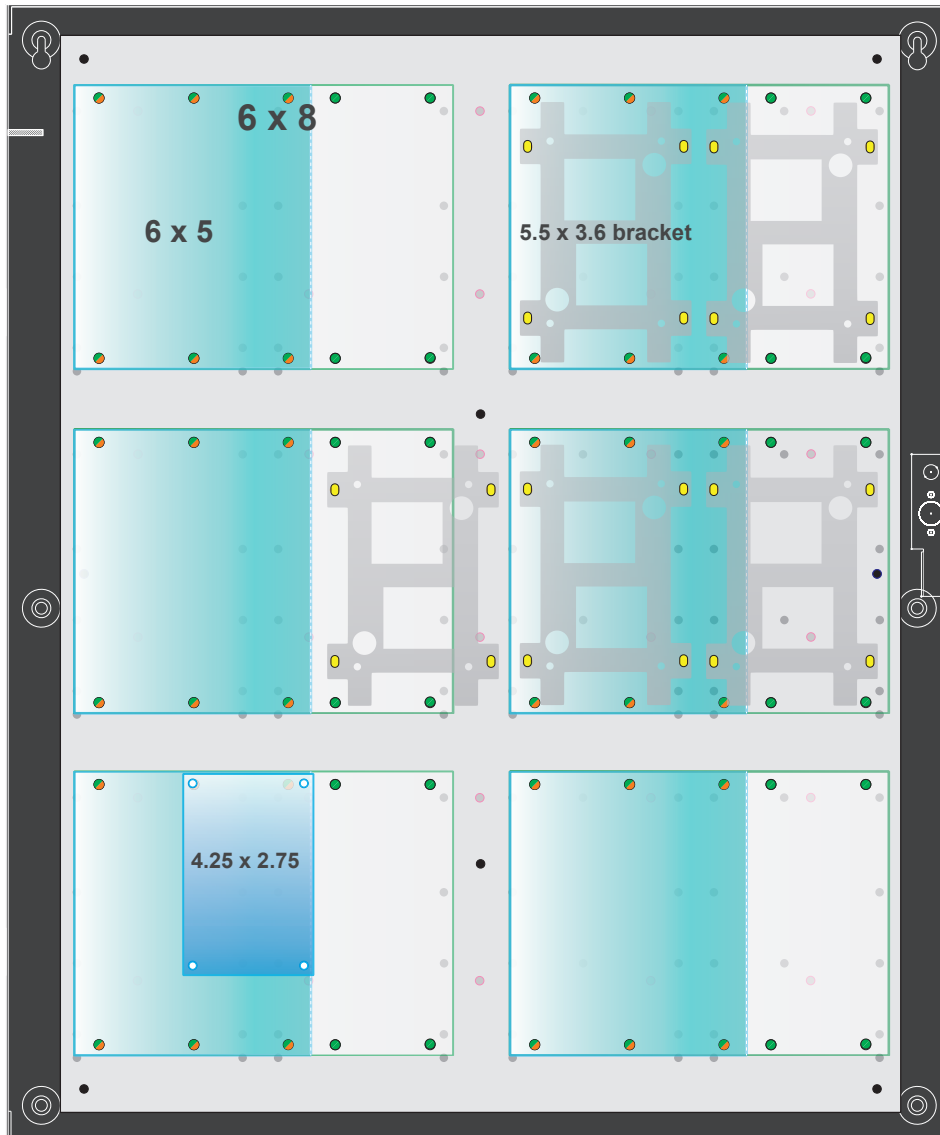
Ordering	Description
AXV-150-16DRE4M1	150W (12V or 24V) 16 auxiliary class 2 outputs, Mercury enclosure







Specifications

Input Power	Input 120/230 VAC 50/60 Hz 170 Watts (1.42A) Overload and short circuit protection Over temperature protection Polarized AC power supply disconnect
Output Power	FPO150: 12V/12A or 24V/6A 150 Watts Outputs: Continuous (DC1) Resettable (DC2) 16 auxiliary outputs, class II power limited at 2.5A each 120 mV output voltage ripple System Efficiency: 87% System BTU Rating: 66 BTU/Hr
Battery Charging	Independent built-in 2A charger for sealed lead acid or gel type batteries Microprocessor dual rate charging of 12 or 24 V battery sets Automatic switchover to standby battery when AC fails Zero voltage drop when switched over to battery backup
Supervision	AC Fail (form "C" contacts) System fail (form "C" contacts) may be triggered by low/no battery, short to earth ground and power supply failure
Visual Indicators	AC input, DC1 and DC2 output System fault AC fault Short to earth ground Reverse battery polarity Fire Alarm Input activated D8P: DC outputs
Regulatory Compliance Mercury/LSP Joint Listing	UL294, UL603, UL1076, ULC S318, ULC S319 CSA C22.2 #107.1, CSA 22.2 #60950 CSFM / FCC Part 15, Subpart B CE
Enclosure Dimensions	Size: 24.00H x 20.00W x 4.50D in. (61.00 x 50.00 x 11.50 cm) Weight: 25 lbs.
Access Panel Mounting	EP1501, EP1502, EP4502, EP2500, MR50, MR51e, MR52, MR16, LNL-500, 1100, 1200, 1300, 1320, 2000, 2210, 2220, 3300

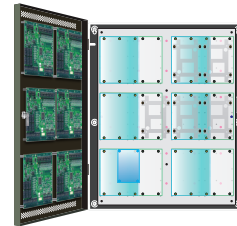
E4M1 backplate access mounting pattern



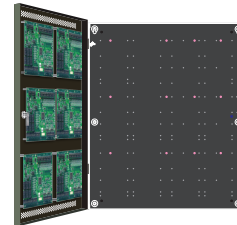
E4M MOUNTING PATTERN KEY

-  (6) slots 6 x 8
-  (6) slots 6 x 5
-  (5) slots 5.5 x 3.6 (bracket)
-  (1) slot 4.25 x 2.75

E4M1 MOUNTS SIX MORE 6x8 TO DOOR



E4M2 MOUNTS 6x8 SIZE ON DOOR ONLY



lifesafetypower.com

(888) 577-2898
info@lifesafetypower.com

Specifications subject to change without notice.

© 2016 LifeSafety Power Inc. All rights reserved. LifeSafety Power and FlexPower are registered trademarks of LifeSafety Power Inc. All other trademarks and copyrights are the property of their respective owners.

P01-642A 08/16

LifeSafety Power, Inc.
 750 Tower Road, Unit B
 Mundelein, IL 60060 USA