



PRESSURE

PRESSURE TRANSMITTER 209 SERIES

DESCRIPTION

The **Setra 209 Series Pressure Transmitter** is specifically designed for industrial applications with high performance requirements. It measures gauge pressure and can be used with gases or liquids compatible with 17-4 PH stainless steel. The **209 Series** is packaged in a rugged, stainless steel/Valox housing, which is small and lightweight. The stainless steel capacitance sensing element and high level output, IC-based circuit assures excellent stability.

FEATURES

- **Low cost**
- **Highly accurate**
- **Current output**
- **Lightweight**
- **Compatible with most common applications**
- **Stainless steel construction**
- **Conduit adapter standard**
- **Optional voltage output available**

APPLICATION

- **HVAC/R equipment**
- **Industrial equipment**
- **Compressor control**
- **Hydraulic systems**
- **Process and refrigeration systems**

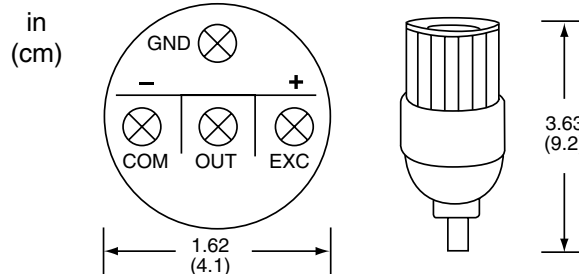
setra



209 Series



DIMENSIONS



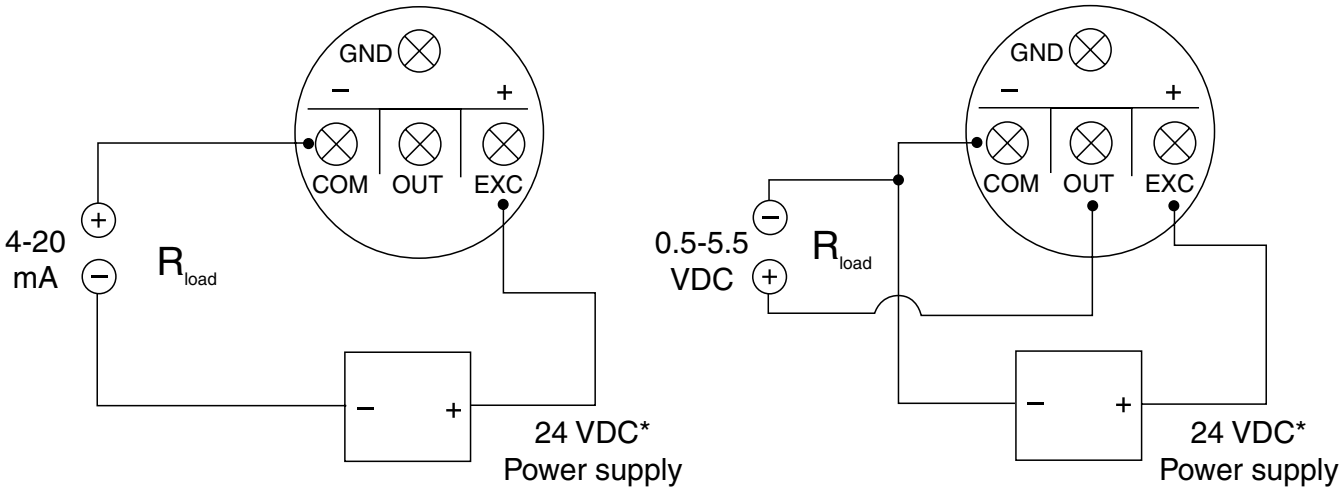
SPECIFICATIONS

| | |
|--------------------------------------|-----------------------------------|
| Supply Voltage | 14 to 30VDC @20mA max |
| Current output | 9 to 30VDC @ <5mA |
| Voltage output | 0.5-5.5V, 4-20mA loop per ordered |
| Signal Output (Volts,Current) | |
| Min Voltage Output Impedance | 50KΩ |
| Max Current Output Impedance | 800Ω @24VDC |
| Accuracy | ± 0.25% Full Scale |
| Sensor Type | Capacitive |
| Adjustments (Z/S) | None required |
| Normal Measurement Range | 0-1 to 0-2000 PSIG (See ordering) |
| Overpressure (Burst) | 250 to 6500 PSIG (See ordering) |

| | |
|---------------------------------------|--|
| Max Operating Pressure (Proof) | 2-3000 PSIG (See ordering) |
| Operating Temperature | -40° to 185°F (-40° to 85°C) |
| Compensated Temp. Range | -4° to 176°F (-20° to 80°C) |
| Operating Humidity | 0 to 95% Non-condensing |
| Wetted Parts | 17-4 Stainless Steel |
| Media Compatibility | Liquid or Gas compatible w/17-4 SS |
| Process Connection | 1/4" MNPT |
| Wiring Terminations | 2-Screw terminals |
| Mounting | By process connection |
| Enclosure Rating | 17-4 Stainless Steel and Valox plastic |
| Dimensions | 1.62"W x 3.63"L, (4.1 x 9.2 cm) |
| Weight | 0.14lb (0.07kg) |
| Approvals | CE, RoHS |
| Warranty | 1 year |



WIRING



* See Specifications on previous page for power supply requirements.

4-20 mA

0.5-5.5 VDC

ORDERING INFORMATION

| MODEL | DESCRIPTION |
|-------|--|
| 209 | Pressure transmitter 4-20mA |
| | RANGE psig |
| 001P | 0 to 1 |
| 002P | 0 to 2 |
| 005P | 0 to 5 |
| 010P | 0 to 10 |
| 025P | 0 to 25 |
| 050P | 0 to 50 |
| 100P | 0 to 100 |
| 200P | 0 to 200 |
| 250P | 0 to 250 |
| | OUTPUT |
| G2M11 | 4-20 mA analog |
| G2M24 | 0.5-5.5 VDC analog |
| | CONNECTION |
| A1 | Threaded conduit connection |
| | OPTIONS |
| E | Watertight enclosure |
| G | Watertight enclosure with gauge |
| LCD | Enclosed (not watertight) with LCD |
| RED | Enclosed (not watertight) with RED LCD |

209 - 050P - G2M11 - A1 - E

Example: 209-050P-G2M11-A1-E 0-50 psig transmitter with 4-20 mA output and conduit connection watertight enclosure

RELATED PRODUCTS

22P-4-2
DCP-1.5-W
DCPA-1.2

1/4" NPT female to 1/8" NPT male fitting
Power supply, 24 VAC IN to 24 VDC OUT
Power supply, 120 VAC In to 24 VAC/24 VDC Out