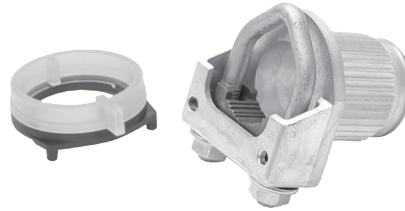


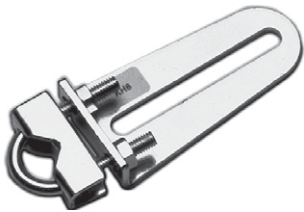
# MD5/MD10/MD20/MD40/LF Actuator Accessories



AV8-25



K-MD10



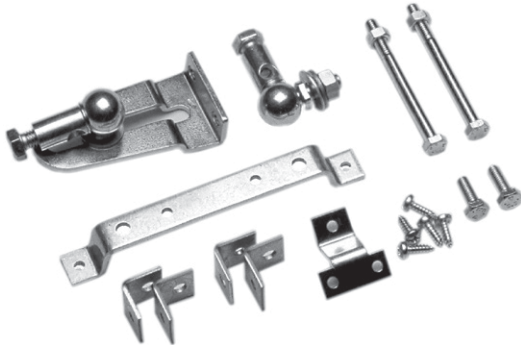
KH8



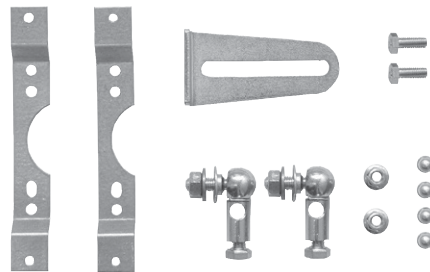
ZDB-AF



ZDB-LF



ZG-AF



ZG-MD20

North America (USA): +1 888 444 1311  
Europe, Middle East & Africa (Sweden): +46 10 478 2000  
Asia Pacific (Singapore): +65 6484 7877  
product.support@schneider-electric.com  
www.schneider-electric.com

Life Is On



## Mechanical Accessories

Name	Description	Part number	MD5	MD10	MD20	MD40	LF	MD10 SR	MD20 SR
AV8-25	Shaft extension Length approx. 250 mm For damper spindles 8...25 mm dia. or 10...25 mm square	914-1023-010		x	x		x	x	x
K-MD10	Reversible spindle clamp	914-1062-000		x					
KH8	Universal damper crank arm Zinc-plated steel For damper spindles 10...18 mm dia. or 10...14 mm square Slot width 8.2 mm	914-1021-000			x		x	x	x
ZG-MDSR	Mounting Kit for flat and side installation	914-1046-000						x	x
ZDB-LF	Angle of rotation limiter and pointer	914-1045-000					x		
ZG-MD20	Parallel lever linkage kit	914-1063-000			x				
Z-AF	Mounting plate adaptor for anti-rotation strap-- Retrofitting MD20 SR or MD10 SR from AF installation	914-1047-000						x	x

## Auxiliary Switch



MD-S2

## Electrical Accessories

Name	Description	Part number	MD5	MD10	MD20	MD40	LF	MD10 SR / MD20 SR
MD-S1	Auxiliary switch, add-on 1×SPDT 1 mA...3(0.5) A, 250 Vac	914-1060-000	x	x	x	x		Actuators only available with integrated switches
MD-S2	Auxiliary switch, add-on ×SPDT1 mA...3(0.5) A, 250 Vac	914-1061-000	x	x	x	x		